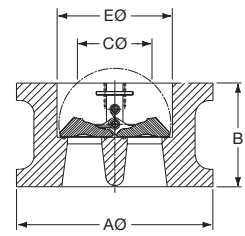
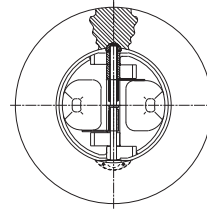


WAFER TYPE BR

INSTALLATION DIMENSIONS



ANSI B16.5 / ANSI B16.47 SERIES A

FLANGE DETAIL

Size inches	Pressure Rating ANSI	End Facing	A Ø mm	B mm	C Ø mm	E Ø mm	HOLE P.C.D mm	HOLE DIA. mm	STUD SELECTION			Δ VALVE APPROX WEIGHT kg
									No.	Diameter inches	*Length mm	
14 (350mm)	150	RF	451	184	286	339	476.3	28.6	12	1	340	123
	300	RF	486	222	286	339	514.4	31.8	20	1 1/8	420	176
	600	RF/RJ-61	492	273	232	339	527.0	38.1	20	1 3/8	535	186
	900	RF/RJ-62	521	356	0	339	558.8	41.3	20	1 1/2	660	396
	1500	RF/RJ-63	578	356	0	339	635.0	60.3	16	2 1/4	810	484
16 (400mm)	150	RF	514	191	332	387	539.8	28.6	16	1	350	133
	300	RF	540	232	330	387	571.5	34.9	20	1 1/4	445	207
	600	RF/RJ-65	565	305	330	387	603.2	41.3	20	1 1/2	590	331
	900	RF/RJ-66	575	384	162	387	616.0	44.5	20	1 5/8	705	532
	1500	RF/RJ-67	641	384	162	387	704.8	66.7	16	2 1/2	885	587
18 (450mm)	150	RF	549	203	395	438	577.9	31.8	16	1 1/8	375	141
	300	RF	597	264	391	438	628.6	34.9	24	1 1/4	485	294
	600	RF/RJ-69	613	362	330	438	654.0	44.5	20	1 5/8	665	394
	900	RF/RJ-70	638	451	244	438	685.8	50.8	20	1 7/8	815	611
	1500	RF/RJ-71	705	468	184	438	774.7	73.0	16	2 3/4	1010	791
20 (500mm)	150	RF	606	219	438	487	635.0	31.8	20	1 1/8	400	215
	300	RF	654	292	438	487	685.8	34.9	24	1 1/4	520	363
	600	RF/RJ-73	683	368	432	487	723.9	44.5	24	1 5/8	685	544
	900	RF/RJ-74	699	451	406	487	749.3	54.0	20	2	835	637
	1500	RF/RJ-75	756	533	210	487	831.8	79.4	16	3	1125	1275
24 (600mm)	150	RF	718	222	537	579	749.3	34.9	20	1 1/4	420	337
	300	RF	775	318	524	579	812.8	41.3	24	1 1/2	570	521
	600	RF/RJ-77	791	438	510	579	838.2	50.8	24	1 7/8	800	819
	900	RF/RJ-78	838	495	445	579	901.7	66.7	20	2 1/2	975	1230
	1500	RF/RJ-79	902	559	391	579	990.6	92.1	16	3 1/2	1235	2713
26 (650mm)	150	RF	775	356	597	629	806.5	34.9	24	1 1/4	605	416
	300	RF	835	356	597	629	876.3	44.5	28	1 5/8	650	735
	600	RF/RJ-93	867	457	578	629	914.4	50.8	28	1 7/8	850	842
	900	RF/RJ-100	883	533	559	629	952.5	73.0	20	2 3/4	1045	1182
28 (700mm)	150	RF	832	381	648	680	863.6	34.9	28	1 1/4	635	544
	300	RF	899	381	648	680	939.8	44.5	28	1 5/8	685	733
	600	RF/RJ-94	914	483	629	680	965.2	54.0	28	2	890	871
	900	RF/RJ-101	946	572	610	680	1022.4	79.4	20	3	1100	1441
30 (750mm)	150	RF	883	305	641	735	914.4	34.9	28	1 1/4	565	662
	300	RF	953	368	641	735	997.0	47.6	28	1 3/4	685	952
	600	RF/RJ-95	972	505	584	735	1022.4	54.0	28	2	920	1578
	900	RF/RJ-102	1010	635	584	735	1085.9	79.4	20	3	1180	2132
32 (800mm)	150	RF	940	356	641	784	977.9	41.3	28	1 1/2	645	707
	300	RF	1006	406	641	784	1054.1	50.8	28	1 7/8	750	1635
	600	RF/RJ-96	1022	533	610	784	1079.5	60.3	28	2 1/4	970	1743
	900	RF/RJ-103	1073	660	610	784	1155.7	85.7	20	3 1/4	1235	2034
36 (900mm)	150	RF	1048	368	648	865	1085.9	41.3	32	1 1/2	675	682
	300	RF	1118	483	648	865	1168.4	54.0	32	2	845	1269
	600	RF/RJ-98	1130	635	527	865	1193.8	66.7	28	2 1/2	1095	2120
	900	RF/RJ-105	1200	718	356	865	1289.1	92.1	20	3 1/2	1335	3259

* Where Ring Joint Facing shown in End Facing, Stud lengths based on Ring Joint flange connection.

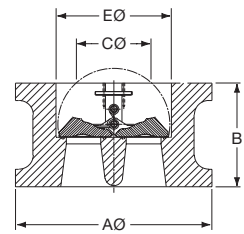
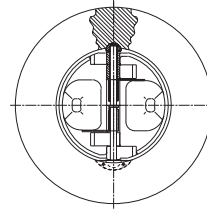
Δ Weights are for valve only and exclude mating flanges and bolting. Weight will vary according to corrosion allowance specification.

VALVE SIZE	2" to 24"	26" to 60"	66" to 144"
FLANGE STANDARD	ANSI B16.5	ANSI B16.47 SERIES A (MSS SP44)	AWWA C207 (CLASS E 275 PSI)

WAFER TYPE BR

INSTALLATION DIMENSIONS

ANSI B16.5



FLANGE DETAIL

Size inches	Pressure Rating ANSI	End Facing	A Ø mm	B mm	C Ø mm	E Ø mm	HOLE P.C.D. mm	HOLE DIA. mm	STUD SELECTION			Δ VALVE APPROX WEIGHT kg
									No.	Diameter inches	*Length mm	
2 (50mm)	150	RF	105	60	0	57	120.7	19.1	4	5/8	165	3
	300	RF	111	60	0	57	127.0	19.1	8	5/8	170	3
	600	RF/RJ-23	111	60	0	57	127.0	19.1	8	5/8	195	3
	900	RF/RJ-24	143	70	0	57	165.1	25.4	8	7/8	240	8
	1500	RF/RJ-24	143	70	0	57	165.1	25.4	8	7/8	240	8
	2500	RF/RJ-26	146	70	0	57	171.4	28.6	8	1	275	13
3 (80mm)	150	RF	137	73	51	87	152.4	19.1	4	5/8	185	6
	300	RF	149	73	51	87	168.3	22.2	8	3/4	205	8
	600	RF/RJ-31	149	73	51	87	168.3	22.2	8	3/4	230	8
	900	RF/RJ-31	168	83	60	87	190.5	25.4	8	7/8	255	12
	1500	RF/RJ-35	175	83	60	87	203.2	31.8	8	1 1/8	285	13
	2500	RF/RJ-32	197	86	60	87	228.6	34.9	8	1 1/4	335	16
4 (100mm)	150	RF	175	73	89	113	190.5	19.1	8	5/8	185	10
	300	RF	181	73	89	113	200.0	22.2	8	3/4	210	11
	600	RF/RJ-37	194	79	89	113	215.9	25.4	8	7/8	255	13
	900	RF/RJ-37	206	102	83	113	235.0	31.8	8	1 1/8	300	19
	1500	RF/RJ-39	210	102	83	113	241.3	34.9	8	1 1/4	325	21
	2500	RF/RJ-38	235	105	83	113	273.0	41.3	8	1 1/2	395	29
6 (150mm)	150	RF	222	98	140	166	241.3	22.2	8	3/4	220	16
	300	RF	251	98	140	166	269.9	22.2	12	3/4	245	20
	600	RF/RJ-45	267	137	89	166	292.1	28.6	12	1	340	36
	900	RF/RJ-45	289	159	89	166	317.5	31.8	12	1 1/8	380	54
	1500	RF/RJ-46	283	159	89	166	317.5	38.1	12	1 3/8	455	52
	2500	RF/RJ-47	318	159	89	166	368.3	54.0	8	2	540	70
8 (200mm)	150	RF	279	127	171	207	298.5	22.2	8	3/4	255	36
	300	RF	308	127	171	207	330.2	25.4	12	7/8	290	40
	600	RF/RJ-49	321	165	168	207	349.2	31.8	12	1 1/8	385	72
	900	RF/RJ-49	359	206	130	207	393.7	38.1	12	1 3/8	455	122
	1500	RF/RJ-50	352	206	130	207	393.7	44.5	12	1 5/8	530	116
	2500	RF/RJ-51	387	206	143	207	438.2	54.0	12	2	630	132
10 (250mm)	150	RF	340	146	235	260	362.0	25.4	12	7/8	285	52
	300	RF	362	146	235	260	387.4	28.6	16	1	325	56
	600	RF/RJ-53	400	213	200	260	431.8	34.9	16	1 1/4	460	118
	900	RF/RJ-53	435	241	195	260	469.9	38.1	16	1 3/8	505	196
	1500	RF/RJ-54	435	248	184	260	482.6	50.8	12	1 7/8	620	203
	2500	RF/RJ-55	476	254	191	260	539.8	66.7	12	2 1/2	790	217
12 (300mm)	150	RF	410	181	260	300	431.8	25.4	12	7/8	325	97
	300	RF	422	181	260	300	450.8	31.8	16	1 1/8	375	98
	600	RF/RJ-57	457	229	232	300	489.0	34.9	20	1 1/4	480	164
	900	RF/RJ-57	498	292	206	300	533.4	38.1	20	1 3/8	575	293
	1500	RF/RJ-58	521	305	210	300	571.5	54.0	16	2	720	373
	2500	RF/RJ-60	549	305	225	300	619.1	73.0	12	2 3/4	895	394

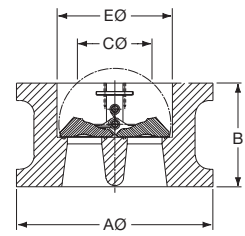
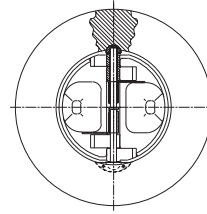
* Where Ring Joint Facing shown in End Facing, Stud lengths based on Ring Joint flange connection.

Δ Weights are for valve only and exclude mating flanges and bolting. Weight will vary according to corrosion allowance specification.

VALVE SIZE	2" to 24"	26" to 60"	66" to 144"
FLANGE STANDARD	ANSI B16.5	ANSI B16.47 SERIES A (MSS SP44)	AWWA C207 (CLASS E 275 PSI)

WAFER TYPE BR

INSTALLATION DIMENSIONS



ANSI B16.47 SERIES A / AWWA C207 CLASS E

FLANGE DETAIL

Size inches	Pressure Rating ANSI	End Facing	A Ø mm	B mm	C Ø mm	E Ø mm	HOLE P.C.D. mm	HOLE DIA. mm	STUD SELECTION			Δ VALVE APPROX WEIGHT kg
									No.	Diameter inches	Length mm	
40 (1000mm)	150	RF	1162	432	882.7	987	1200.2	41.3	36	1 1/2	740	962
	300	RF	1114	546	749.3	909	1155.7	44.5	32	1 5/8	910	1825
	600	RF	1156	660	743.0	909	1212.9	60.3	32	2 1/4	1155	3750
	900	RF	1251	762	736.6	909	1339.9	92.1	24	3 1/2	1395	3972
42 (1050mm)	150	RF	1219	432	935.1	1062	1257.3	41.3	36	1 1/2	755	1134
	300	RF	1168	568	836.6	1015	1206.5	44.5	32	1 5/8	940	2630
	600	RF	1219	702	647.7	972	1282.7	66.7	28	2 1/2	1225	3135
	900	RF	1302	787	584.2	972	1390.7	92.1	24	3 1/2	1440	3670
48 (1200mm)	150	RF	1384	524	1036.7	1193	1422.4	41.3	44	1 1/2	865	3007
	300	RF	1324	629	965.2	1136	1371.6	50.8	32	1 7/8	1040	4400
	600	RF	1391	787	889	1136	1460.5	73.0	32	2 3/4	1365	4416
54 (1350mm)	150	RF	1549	591	1092.2	1281	1593.9	47.6	44	1 3/4	970	2680
	300	RF	1492	718	1092.2	1281	1549.4	60.3	28	2 1/4	1190	3878
60 (1500mm)	150	RF	1715	660	1206.5	1422	1759.0	47.6	52	1 3/4	1065	4148
	300	RF	1645	838	1206.5	1422	1701.8	60.3	32	2 1/4	1330	5392
66 (1650mm)	150	RF	1886	787	1435.1	1663	1930.4	47.6	52	1 3/4	1090	7636
72 (1800mm)	150	RF	2051	851	1530.4	1818	2095.5	47.6	60	1 3/4	1160	8590
78 (1950mm)	150	RF	2210	927	1663.7	1974	2260.6	54.0	64	2	1265	10237
84 (2100mm)	150	RF	2375	1041	1752.6	2116	2425.7	54.0	64	2	1380	12777
90 (2250mm)	150	RF	**	**	**	**	**	**	**	**	**	**
96 (2400mm)	150	RF	**	**	**	**	**	**	**	**	**	**
102 (2550mm)	150	RF	**	**	**	**	**	**	**	**	**	**
108 (2700mm)	150	RF	**	**	**	**	**	**	**	**	**	**
114 (2850mm)	150	RF	**	**	**	**	**	**	**	**	**	**
120 (3000mm)	150	RF	**	**	**	**	**	**	**	**	**	**
126 (3150mm)	150	RF	**	**	**	**	**	**	**	**	**	**
132 (3300mm)	150	RF	**	**	**	**	**	**	**	**	**	**
138 (3450mm)	150	RF	**	**	**	**	**	**	**	**	**	**
144 (3600mm)	150	RF	**	**	**	**	**	**	**	**	**	**

Δ Weights are for valve only and exclude mating flanges and bolting. Weight will vary according to corrosion allowance specification

** Apply to Goodwin for details

VALVE SIZE	26" to 60"	*** 66" to 144"
FLANGE STANDARD	ANSI B16.47 SERIES A (MSS SP44)	AWWA C207 (CLASS E 275 PSI)

*** Valves 66" to 144" can be supplied with dimensions to suit flange standards AWWA C207 Classes B, D, E or F and Taylor Forge