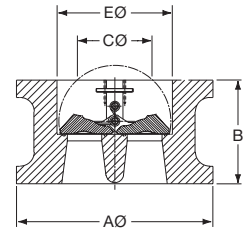
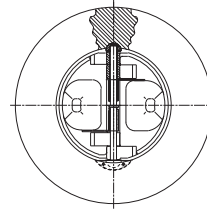


# WAFER TYPE BR

## INSTALLATION DIMENSIONS

### ANSI B16.47 SERIES B



#### FLANGE DETAIL

Size inches	Pressure Rating ANSI	End Facing	A Ø mm	B mm	C Ø mm	E Ø mm	HOLE P.C.D. mm	HOLE DIA. mm	STUD SELECTION			Δ VALVE APPROX WEIGHT kg
									No.	Diameter inches	*Length mm	
26 (650mm)	150	RF	725	356	597	629	744.5	22.2	36	3/4	525	395
	300	RF	771	356	597	629	803.3	34.9	32	1 1/4	650	698
	600	RF/RJ-93	765	457	578	629	806.5	44.5	28	1 5/8	850	800
	900	RF/RJ-100	838	533	559	629	901.7	66.7	20	2 1/2	1025	1123
28 (700mm)	150	RF	776	381	648	680	795.3	22.2	40	3/4	555	517
	300	RF	826	381	648	680	857.3	34.9	36	1 1/4	675	696
	600	RF/RJ-94	819	483	629	680	863.6	47.6	28	1 3/4	895	827
	900	RF/RJ-101	902	572	610	680	971.6	73.0	20	3	1110	1369
30 (750mm)	150	RF	827	305	641	735	846.1	22.2	44	3/4	480	629
	300	RF	886	368	641	735	920.8	38.1	36	1 3/8	675	904
	600	RF/RJ-95	880	505	584	735	927.1	50.8	28	1 7/8	935	1499
	900	RF/RJ-102	959	635	584	735	1035.1	79.4	20	3	1185	2025
32 (800mm)	150	RF	881	356	641	784	900.2	22.2	48	3/4	530	672
	300	RF	940	406	641	784	977.9	41.3	32	1 1/2	740	1553
	600	RF/RJ-96	933	533	610	784	984.3	54.0	28	2	985	1656
	900	RF/RJ-103	1016	660	610	784	1092.2	79.4	20	3 1/4	1230	1932
36 (900mm)	150	RF	987	368	648	865	1009.7	25.4	44	7/8	565	648
	300	RF	1048	483	648	865	1089.0	44.5	32	1 5/8	840	1206
	600	RF/RJ-98	1048	635	527	865	1104.9	60.3	28	2 1/4	1135	2014
	900	RF/RJ-105	1124	718	356	865	1200.2	79.4	24	3	1310	3096
40 (1000mm)	150	RF	1095	432	883	987	1120.6	28.6	44	1	640	1166
	300	RF	1150	546	749	909	1190.8	44.5	40	1 5/8	910	2007
42 (1050mm)	150	RF	1146	432	935	1062	1171.4	28.6	48	1	645	1077
	300	RF	1200	568	837	1015	1244.6	47.6	36	1 3/4	945	2893
48 (1200mm)	150	RF	1307	524	1037	1193	1335.0	31.8	44	1 1/8	760	2857
	300	RF	1368	629	965	1136	1416.1	50.8	40	1 7/8	1130	4840
54 (1350mm)	150	RF	1464	591	1092	1281	1492.3	31.8	56	1 1/8	840	2546
	300	RF	1530	718	1092	1281	1577.8	50.8	48	1 7/8	1150	4266
60 (1500mm)	150	RF	1630	660	1207	1422	1662.2	34.9	52	1 1/4	925	3941
	300	RF	1707	838	1207	1422	1763.8	60.3	40	2 1/4	1305	5931

\* Where Ring Joint Facing shown in End Facing, Stud lengths based on Ring Joint flange connection.

Δ Weights are for valve only and exclude mating flanges and bolting. Weight will vary according to corrosion allowance specification.

INTERMEDIATE SIZES ARE AVAILABLE TO SPECIAL ORDER  
FACE TO FACE DIMENSIONS ARE TO API 594