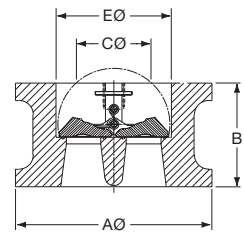
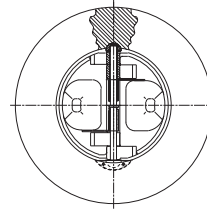


# WAFER TYPE BR

## INSTALLATION DIMENSIONS

**API 6A / ISO 10423**



### FLANGE DETAIL

| Size<br>inches | API<br>Rating<br>PSI CWP | End<br>Facing | A Ø<br>mm | B<br>mm | C Ø<br>mm | E Ø<br>mm | HOLE<br>P.C.D.<br>mm | HOLE<br>DIA.<br>mm | STUD SELECTION |                    |               | Δ VALVE<br>APPROX<br>WEIGHT<br>kg |
|----------------|--------------------------|---------------|-----------|---------|-----------|-----------|----------------------|--------------------|----------------|--------------------|---------------|-----------------------------------|
|                |                          |               |           |         |           |           |                      |                    | No.            | Diameter<br>inches | *Length<br>mm |                                   |
| 2 1/16         | 2000                     | RJ-23         | 111       | 70      | 0         | 57        | 127.0                | 19.1               | 8              | 5/8                | 210           | 3                                 |
|                | 3000                     | RJ-24         | 143       | 70      | 0         | 57        | 165.1                | 25.4               | 8              | 7/8                | 245           | 8                                 |
|                | 5000                     | RJ-24         | 143       | 70      | 0         | 57        | 165.1                | 25.4               | 8              | 7/8                | 245           | 8                                 |
| 3 1/8          | 2000                     | RJ-31         | 149       | 83      | 51        | 87        | 168.1                | 22.2               | 8              | 3/4                | 240           | 7                                 |
|                | 3000                     | RJ-31         | 168       | 83      | 60        | 87        | 190.5                | 25.4               | 8              | 7/8                | 260           | 13                                |
|                | 5000                     | RJ-35         | 175       | 86      | 60        | 87        | 203.2                | 31.8               | 8              | 1 1/8              | 295           | 14                                |
| 4 1/16         | 2000                     | RJ-37         | 194       | 102     | 89        | 113       | 215.9                | 25.4               | 8              | 7/8                | 280           | 9                                 |
|                | 3000                     | RJ-37         | 206       | 102     | 83        | 113       | 235.0                | 31.8               | 8              | 1 1/8              | 305           | 20                                |
|                | 5000                     | RJ-39         | 210       | 105     | 83        | 113       | 241.3                | 31.8               | 8              | 1 1/8              | 335           | 28                                |
| 7 1/16         | 2000                     | RJ-45         | 267       | 159     | 89        | 166       | 292.1                | 28.6               | 12             | 1                  | 360           | 32                                |
|                | 3000                     | RJ-45         | 289       | 159     | 89        | 166       | 317.5                | 31.8               | 12             | 1 1/8              | 385           | 54                                |
|                | 5000                     | RJ-45         | 283       | 159     | 89        | 166       | 317.5                | 38.1               | 12             | 1 3/8              | 455           | 53                                |
| 9              | 2000                     | RJ-49         | 321       | 206     | 168       | 207       | 349.3                | 31.8               | 12             | 1 1/8              | 430           | 65                                |
|                | 3000                     | RJ-49         | 359       | 206     | 130       | 207       | 393.7                | 38.1               | 12             | 1 3/8              | 460           | 123                               |
|                | 5000                     | RJ-50         | 352       | 206     | 130       | 207       | 393.7                | 44.5               | 12             | 1 5/8              | 535           | 117                               |
| 11             | 2000                     | RJ-53         | 400       | 241     | 200       | 260       | 431.8                | 34.9               | 16             | 1 1/4              | 490           | 113                               |
|                | 3000                     | RJ-53         | 435       | 248     | 195       | 260       | 469.9                | 38.1               | 16             | 1 3/8              | 515           | 197                               |
|                | 5000                     | RJ-54         | 435       | 254     | 184       | 260       | 482.6                | 50.8               | 12             | 1 7/8              | 630           | 204                               |
| 13 5/8         | 2000                     | RJ-57         | 457       | 292     | 232       | 300       | 487.7                | 34.9               | 20             | 1 1/4              | 545           | 140                               |
|                | 3000                     | RJ-57         | 498       | 305     | 206       | 300       | 533.4                | 38.1               | 20             | 1 3/8              | 590           | 327                               |

Δ Weights are for valve only and exclude mating flanges and bolting.

API 10000 Valves are available upon application. API 10000 Valves have retaining plugs, ie are not retainerless.

Testing procedure in accordance with API 6A / ISO 10423. Allowable leakage rate in accordance with API 598.

## TYPE BR to API 6D / ISO 14313

THE INSTALLATION DIMENSIONS  
ARE THE SAME AS ANSI VALVES (WAFER TYPE BR)

SIZE 2" - 12" 2500#      14" - 24" 1500#

TESTING PROCEDURE IN ACCORDANCE WITH API 6D / ISO 14313  
ALLOWABLE LEAKAGE RATE IN ACCORDANCE WITH API 598.