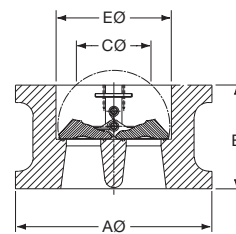
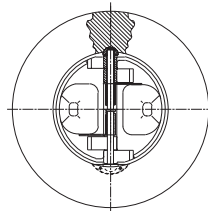


WAFER TYPE BR

INSTALLATION DIMENSIONS

JIS 2210 & KS B1511



FLANGE DETAIL

| Size inches | Series | End Facing | A Ø mm | B mm | C Ø mm | E Ø mm | HOLE P.C.D. mm | HOLE DIA. mm | STUD SELECTION | | | Δ VALVE APPROX WEIGHT kg |
|----------------|--------|------------|-----------|---------|-----------|-----------|----------------------|--------------------|----------------|----------|--------------|-----------------------------------|
| | | | | | | | | | No. | Diameter | Length mm | |
| 2 (50mm) | 10K | RF | 101 | 60 | 0 | 57 | 120 | 19 | 4 | M16 | 150 | 2.5 |
| | 20K | RF | 101 | 60 | 0 | 57 | 120 | 19 | 8 | M16 | 150 | 2.5 |
| 3 (80mm) | 10K | RF | 131 | 73 | 51 | 87 | 150 | 19 | 8 | M16 | 168 | 6.5 |
| | 20K | RF | 137 | 73 | 51 | 87 | 160 | 23 | 8 | M20 | 180 | 6.5 |
| 4 (100mm) | 10K | RF | 156 | 73 | 89 | 113 | 175 | 19 | 8 | M16 | 165 | 8.1 |
| | 20K | RF | 162 | 73 | 89 | 113 | 185 | 23 | 8 | M20 | 185 | 8.1 |
| 6 (150mm) | 10K | RF | 217 | 98 | 140 | 166 | 240 | 23 | 8 | M20 | 205 | 16.0 |
| | 20K | RF | 235 | 98 | 140 | 166 | 260 | 25 | 12 | M22 | 215 | 16.2 |
| 8 (200mm) | 10K | RF | 267 | 127 | 171 | 206 | 290 | 23 | 12 | M20 | 235 | 29.0 |
| | 20K | RF | 280 | 127 | 171 | 206 | 305 | 25 | 12 | M22 | 250 | 29.2 |
| 10 (250mm) | 10K | RF | 330 | 146 | 235 | 260 | 355 | 25 | 12 | M22 | 265 | 48.5 |
| | 20K | RF | 353 | 146 | 235 | 260 | 380 | 27 | 12 | M24 | 275 | 49.0 |
| 12 (300mm) | 10K | RF | 375 | 181 | 260 | 300 | 400 | 25 | 16 | M22 | 300 | 91.0 |
| | 20K | RF | 403 | 181 | 260 | 300 | 430 | 27 | 16 | M24 | 315 | 92.0 |
| 14 (350mm) | 10K | RF | 420 | 184 | 286 | 339 | 445 | 25 | 16 | M22 | 305 | 90.0 |
| | 20K | RF | 447 | 222 | 286 | 339 | 480 | 33 | 16 | M30 | 375 | 92.0 |
| 16 (400mm) | 10K | RF | 483 | 191 | 332 | 387 | 510 | 27 | 16 | M24 | 320 | 125.0 |
| | 20K | RF | 507 | 232 | 332 | 387 | 540 | 33 | 16 | M30 | 395 | 127.0 |
| 18 (450mm) | 10K | RF | 538 | 203 | 395 | 438 | 565 | 27 | 20 | M24 | 335 | 132.0 |
| | 20K | RF | 572 | 264 | 395 | 438 | 605 | 33 | 20 | M30 | 435 | 134.0 |
| 20 (500mm) | 10K | RF | 593 | 219 | 438 | 487 | 620 | 27 | 20 | M24 | 350 | 185.0 |
| | 20K | RF | 627 | 292 | 438 | 487 | 660 | 33 | 20 | M30 | 465 | 188.0 |
| 24 (600mm) | 10K | RF | 697 | 222 | 537 | 579 | 730 | 33 | 24 | M30 | 370 | 285.0 |
| | 20K | RF | 731 | 318 | 537 | 579 | 770 | 39 | 24 | M36 | 510 | 289.0 |
| 26 (650mm) | 10K | RF | 747 | 356 | 597 | 629 | 780 | 33 | 24 | M30 | 510 | 567.0 |
| | 20K | RF | 802 | 356 | 597 | 629 | 850 | 48 | 24 | M45 | 590 | 571.0 |
| 28 (700mm) | 10K | RF | 807 | 381 | 648 | 680 | 840 | 33 | 24 | M30 | 535 | 576.0 |
| | 20K | RF | 852 | 381 | 648 | 680 | 900 | 48 | 24 | M45 | 625 | 579.0 |
| 30 (750mm) | 10K | RF | 867 | 305 | 641 | 734 | 900 | 33 | 24 | M30 | 465 | 442.0 |
| | 20K | RF | 914 | 368 | 641 | 734 | 970 | 56 | 24 | M52 | 634 | 447.0 |
| 32 (800mm) | 10K | RF | 917 | 356 | 641 | 784 | 950 | 33 | 28 | M30 | 515 | 1319.0 |
| | 20K | RF | 974 | 406 | 641 | 784 | 1030 | 56 | 24 | M52 | 680 | 1325.0 |
| 36 (900mm) | 10K | RF | 1017 | 368 | 648 | 865 | 1050 | 33 | 28 | M30 | 530 | 640.0 |
| | 20K | RF | 1084 | 483 | 648 | 865 | 1140 | 56 | 28 | M52 | 765 | 647.0 |
| 40 (1000mm) | 10K | RF | 1121 | 432 | 883 | 909 | 1160 | 39 | 28 | M36 | 585 | 855.0 |
| 48 (1200mm) | 10K | RF | 1341 | 524 | 1037 | 1193 | 1380 | 39 | 32 | M36 | 710 | 1891.0 |
| 54 (1350mm) | 10K | RF | 1495 | 590 | 1092 | 1281 | 1540 | 45 | 36 | M42 | 800 | 3063.0 |
| 60 (1500mm) | 10K | RF | 1655 | 660 | 1206 | 1421 | 1700 | 45 | 40 | M42 | 870 | 3840.0 |

Δ Weights are for valve only and exclude mating flanges and bolting.